

How to change my Logo?

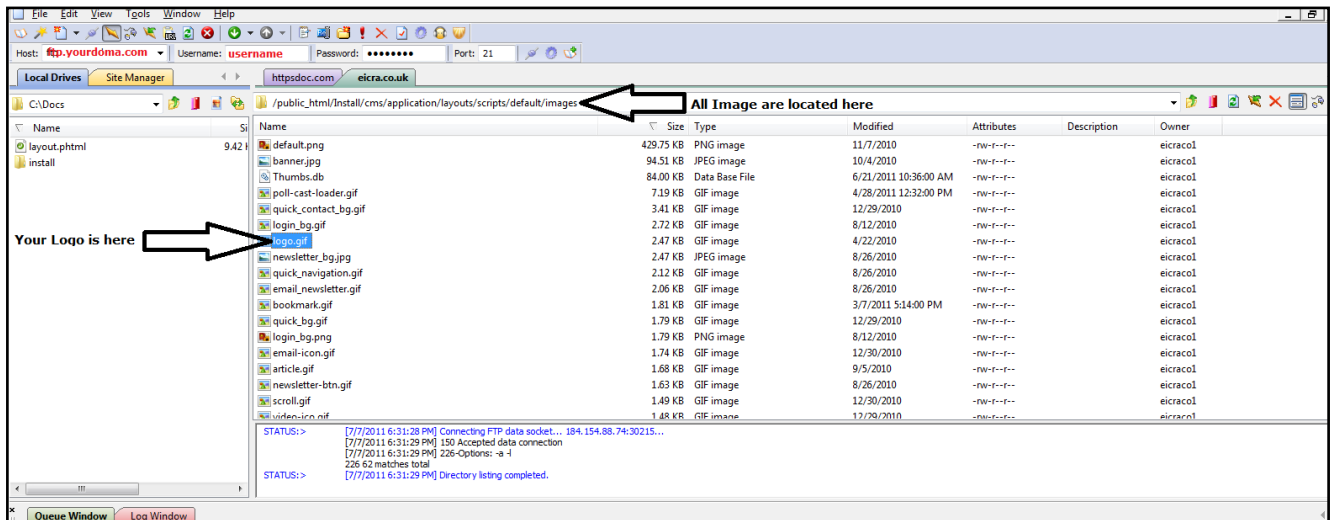
If you are using our default template, there are two ways to change the logo. There are :

Overwrite Logo Images:

By default all logo and images are located at /<\$ServerPath>/application/layouts/scripts/<\$TemplatePath>/images/ therefore you can upload & overwrite logo image to application/layouts/scripts/<\$DefaultTemplateDirectory>/images/logo.png

Update the Header Block:

By default all design blocks are located at /<\$ServerPath> /application/layouts/scripts/<\$DefaultTemplateDirectory >/blocks/ therefore you can edit top-menu.phtml page to add custom logo location and save it.



Article ID: 47

Last updated: 07 Jul, 2011

Revision: 7

Modules Wise Documentation -> Introduction -> How to change my Logo?

<http://www.httpsdoc.com/entry/47/>